



Area Analysis

Living Space:	188.9m ²
Garage:	40.5m ²
Total Building:	229.4m ²
Porch:	2.1m ²
House depth:	15.81m
House width:	13.15m

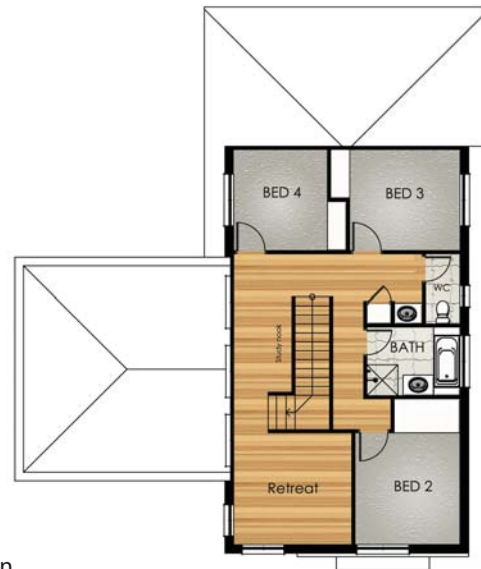
The Cayman design from the Regent Homes beautiful Two Storey Range, is set to impress with fabulous open plan living spaces. Let the kids play in their separate retreat up-stairs as you entertain your guests in the living with the utilisation of your fabulous designer kitchen.

The Cayman boasts four spacious bedrooms, all having built-in robes or provisions and Bedroom 1 containing a large WIR and modern Ensuite. A separate bathroom and toilet service the upstairs secondary bedrooms and lovely retreat, whilst mum and dad have their own private sanctuary downstairs. Complete with a generous laundry and multiple linen, what more could you need to be well equipped and soundly at home, than what the beautiful Cayman has to offer?

Enquire today about how to get into your Cayman dream home!

At Regent Homes we create innovative, functional homes.

Whether it be our plans or yours, single or two storey, perhaps split level, Regent Homes has the expertise and reputation as a leading builder of individually designed new homes, unit developments, additions or renovations.



upper floor plan



lower floor plan