



Area Analysis

Living Space:	221.1m ²
Garage:	40.4m ²
Total Building:	261.5m ²
Porch:	12.4m ²
House depth:	16.95m
House width:	15.1m

Welcome to the Geneva design from Regent Homes very impressive Two Storey Range. The stylish and sophisticated Geneva home is an entertainers dream, with a fabulous open plan family kitchen and meals area along with a separate dining area for those more formal occasions. Invite your closest friends to watch their favourite flicks in your very own home theatre room.

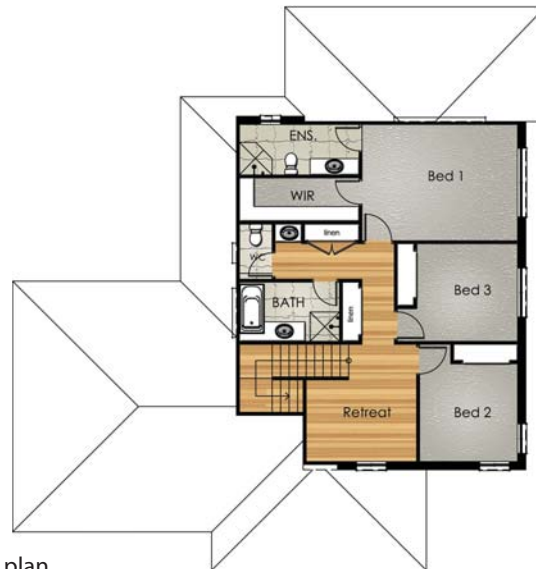
Sleep tight upstairs where the bedrooms are separate from the downstairs entertaining. The Geneva has three generous bedrooms, all of which contain built-in robes or provisions, apart from Bed 1 which has a large WIR and modern Ensuite. A separate bathroom and toilet service the second and third bedrooms as well as the well appointed upstairs retreat.

Enquire today about how to get into your Geneva dream home!

At Regent Homes we create innovative, functional homes.

Whether it be our plans or yours, single or two storey, perhaps split level, Regent Homes has the expertise and reputation as a leading builder of individually designed new homes, unit developments, additions or renovations.

P: +61 8 8351 2022 | F: +61 8 8351 2011
sales@regenthomes.com.au



upper floor plan



lower floor plan